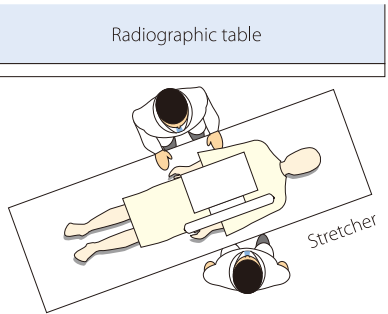
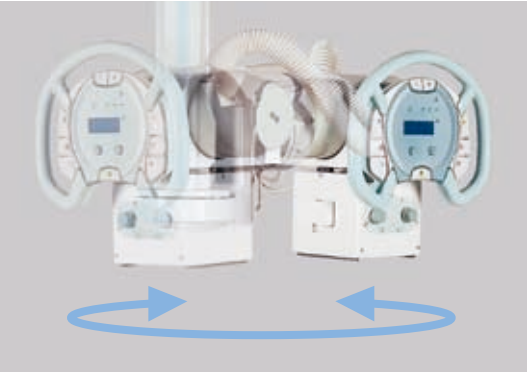


Free Rotation about the Support Axis

Rotation around the vertical axis is enabled, by activating the rotation-switch, which is located on the control panel. The lock can be set in any position, allowing precise, accurate positioning.



There are times when it is necessary to take X-rays of patients lying on stretchers because they cannot be moved. The ceiling mounted support provides the subtle angular adjustments necessitated by a patient's posture to be made accurately and smoothly.

Impressive Flexibility for Erect Procedures with Increased Vertical Movement

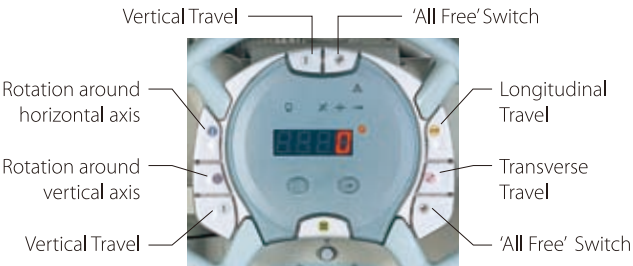
There is an "All Lock-Release Switch" on the upper part of the handle, allowing one-handed operation for procedures in the standing position.



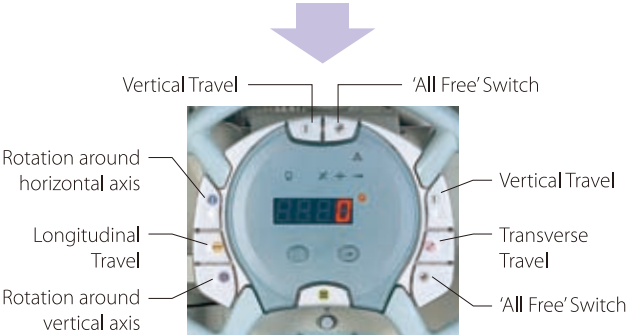
Smooth Operability

User-definable Brake-release Buttons

The 8 brake-release buttons positioned on the control panel can be customized to suit each user's individual preferences.



Example of Key Allocation for Supine Position (Standard)



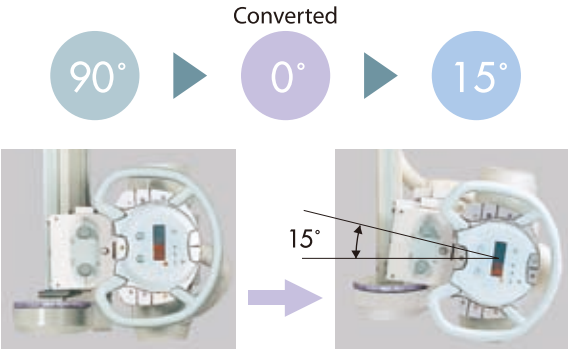
Example of Key Allocation for Standing Position

Large and Clear Digital Angle Display



V/H (Vertical / Horizontal) angle display conversion

When taking images in the Vertical position the angle display can be converted to vertical angle mode and specific degree angulations that are required can be made.



Specifications

Item	Standard type	Rear-mounting type (*2)	Front mount L type	Low-ceiling type
Maximum supportable weight	39 kg			
Balancing system	Spring-balanced type			
Ceiling fixtures Rail	Fixed rail: 4 m; Traveling rail: 2 m (Other lengths are also available.)			
Movement of X-ray tube assembly	Range of movement	Vertical travel (*1)	With ceiling height of 2,850 mm: 400 to 2,000 mm	With ceiling height of 2,850 mm: 400 to 2,000 mm
			Continuous	
		Longitudinal travel	2,950 mm (with a 4 m fixed rail)	
		Transverse travel	1,400 mm (with a 2 m traveling rail)	
	Rotation about the vertical axis	Operation	Manual, electromagnetic lock (released when activated)	
		Angle of rotation	±180°, continuous (click stops at 90° intervals)	
		Operation	Manual, electromagnetic lock (released when activated)	
		Angle of rotation	+120° to -180°, continuous Click stops at 0° and 90°	
	Rotation about the horizontal axis	Operation	Manual, electromagnetic lock (released when activated)	
		Display	Angle of rotation displayed digitally	2,700 mm
Standard ceiling height	2,850 mm (*3)			
Weight	250 kg (including support, 4m fixed rail, and 2 m traveling rail)			
Power source	Single phase, 100 VAC, 0.7 A, 50/60 Hz (supplied from X-ray high-voltage generator)			

\*1 Distance between focus and floor with standard rails (The values are 10 mm less if a wide fixed rail is used.)  
\*2 Low-ceiling type are not available with the rear-mounting design.  
\*3 Installation with the focus 350mm lower is possible, thus vertical travel movement 400 to 2,000mm is maintained although the ceiling height is 3200mm.



Shimadzu Corporation Medical Systems Group has been certified by TÜV Rheinland as a manufacturer of medical equipment and systems in compliance with ISO9001:2000 Quality Management Systems and ISO13485:2003 Medical Equipment Quality Management Systems.

**Remarks:**  
※ Every value in this catalogue is a standard value, and it may vary a little from the actual at each site.  
※ The appearances and specifications are subject to change for reasons of improvement without notice.  
※ Certain configurations may not be available pending regulatory clearance. Contact your Shimadzu representative for information on specific configurations.  
※ Before operating this system, you should first thoroughly review the Instruction Manual.



SHIMADZU CORPORATION, International Marketing Division  
3. Kanda-Nishikicho 1-chome, Chiyoda-ku, Tokyo 101-8448, Japan  
Phone: 81(3)3219-5641 Fax: 81(3)3219-5710  
URL <http://www.shimadzu.com>



Ceiling Type X-ray Tube Support

CH-200M



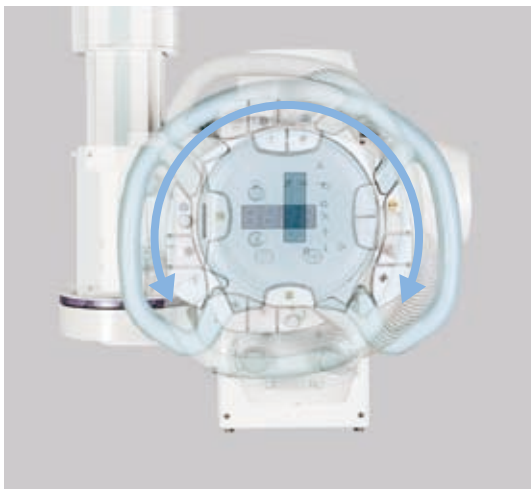
# New Advanced Engineering Delivers Greater Benefits!

## Easier Positioning with the New-Style Handle

The handle's easy-to-grip ergonomic design allows for the fast, accurate single handed maneuvering that is necessary for complex angles in orthopedic procedures and emergency use.



The support can be fixed at any angle.



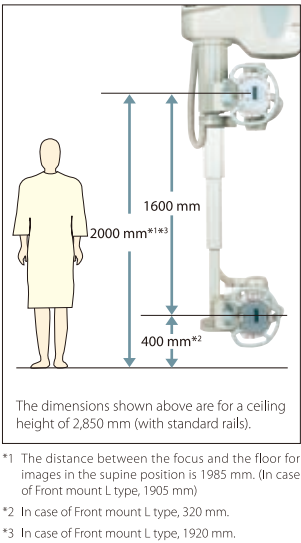
The tube rotation is pin-locked every 90° with quick resetting for bucky radiography.

## Long Vertical Travel

The long vertical travel range, which is 1600mm, provides sufficient SID (Source Image Distance) for images in the supine position as well as for low position images in the standing position.



X-rays of the knee-joint can be taken in the standing position.



## Light Handling for Operators

### Aluminum Rails Ensure Smooth Operation

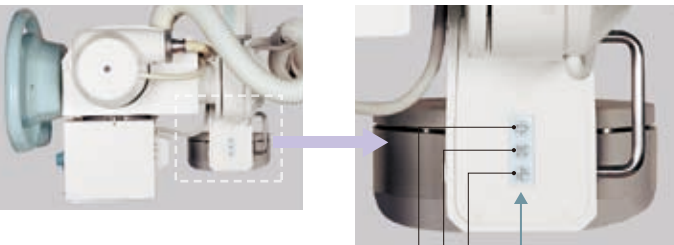
The aluminum rail has a dual structure that incorporates a hardened steel inner-rail wear strip, reducing unevenness on the bearing surface and providing a smooth operation.

### Stops Precisely at the Required Position Using a Pin-stop Mechanism

The ceiling support is equipped with a pin-stop mechanism, which accurately locates the column assembly in the 'Center-Find Position'. Due to its precise pin-stop mechanism this allows rapid preparation for taking X-ray images. There is also a mechanism for suppressing shock when the support is stopped quickly and suddenly, ensuring greater durability.

### Handy Brake-release Buttons on the Rear of the Support Assembly

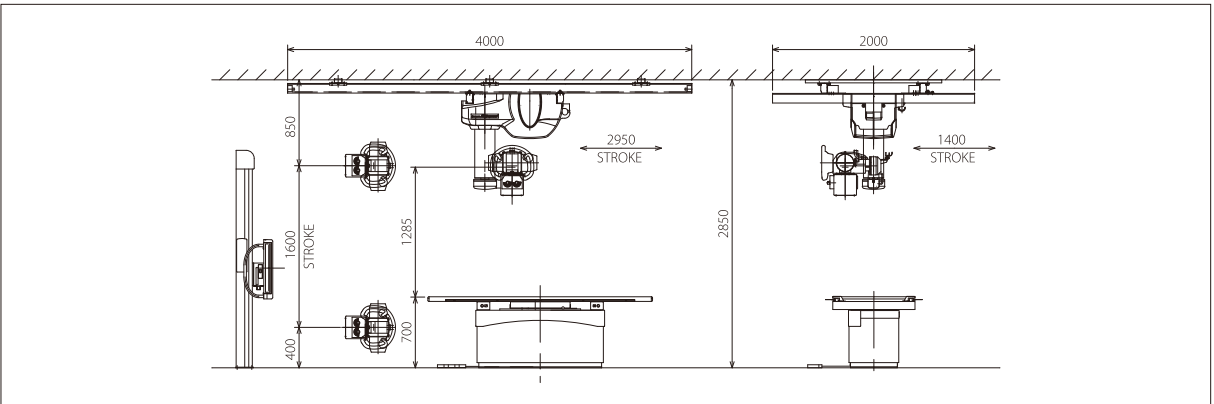
Buttons allowing rotation around the vertical axis and motion in any direction, as well as a collimator lamp switch, are provided on the rear of the support. This feature gives the versatility to perform positioning in emergencies or any other situation.



Rotation around vertical axis switch  
Collimator lamp switch  
'All Free' switch  
Handy Brake-release Buttons

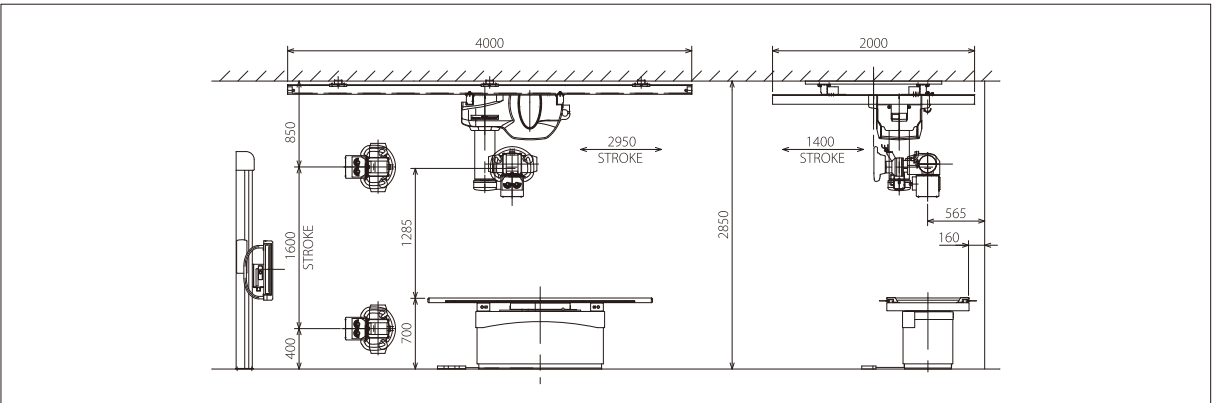
Choose from three models depending on installation requirements.

### Standard Type



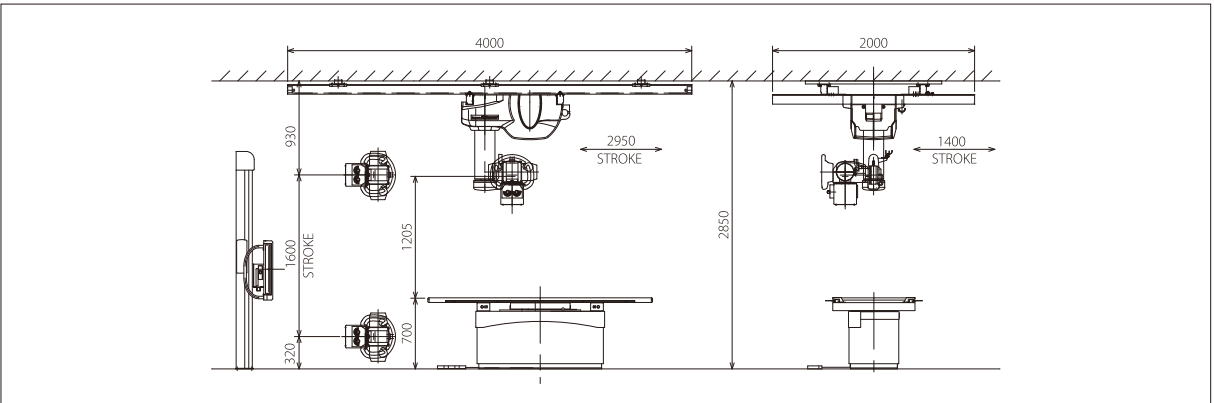
### Rear-mounting Type

Effective in cases where the radiographic table is installed close to the wall.



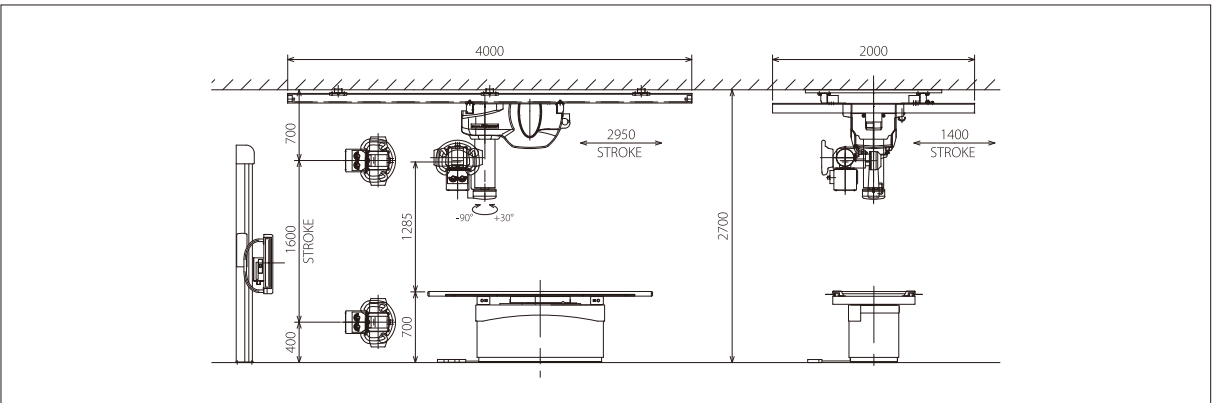
### Front mount L Type

Eases positioning by preventing interference between the lower edge of the tube support and the tabletop during lateral radiography using the radiography table.



### Low-ceiling Type

Even with a ceiling height of 2,700 mm, the same exposure range as the standard type can be attained.



A Design Evolution